

Pleasure-Way



PROUD OWNERS



ON THE ROAD AGAIN!

Mr. and Mrs. Kearnen in their new 1994 Pleasure-Way, the first Canadian Pleasure-Way to be manufactured on the newly redesigned Chrysler chassis. In 1986 the Kearnen's were Pleasure-Way Industries' first customer. Now they are pictured above with their third Class B Motorhome. From the time the Kearnens recieved their first Pleasure-Way, Pleasure-Way Industries Ltd. has become a driving force in the Class B Motorhome Industry. With refreshing and original floor plans featuring rear livingrooms, private bathrooms, and boasting a dealership network reaching across North America and Japan.

REAR LIVING ROOM

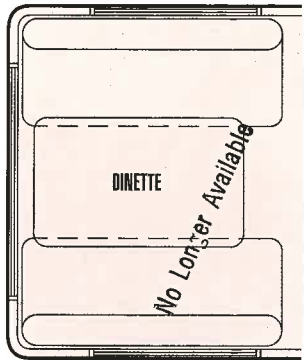
Dining, entertaining, or sleeping, the rear livingroom will provide a focal point for all your rest and relaxation.



FULLY EQUIPPED GALLEY

Every galley contains a 3cu ft. Dometic fridge, Sanyo microwave oven, 2-burner stove, stainless steel sink and slide-out pantry with an arborite top for more counter space.

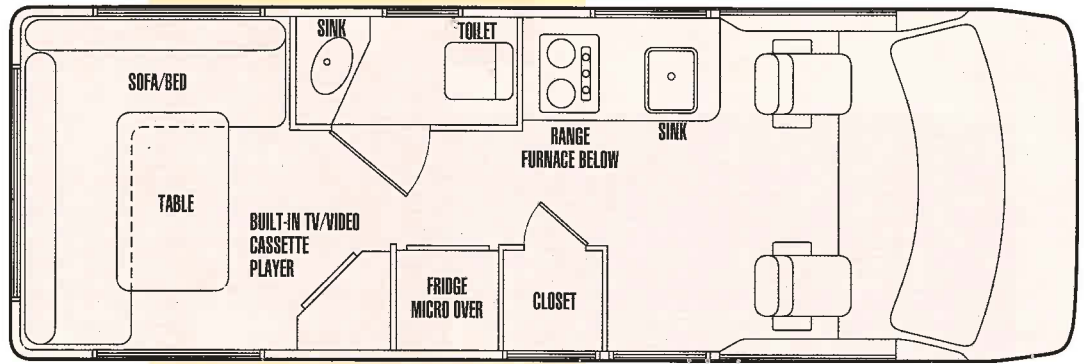
Rear dinette may be substituted for the rear livingroom.



REAR DINETTE

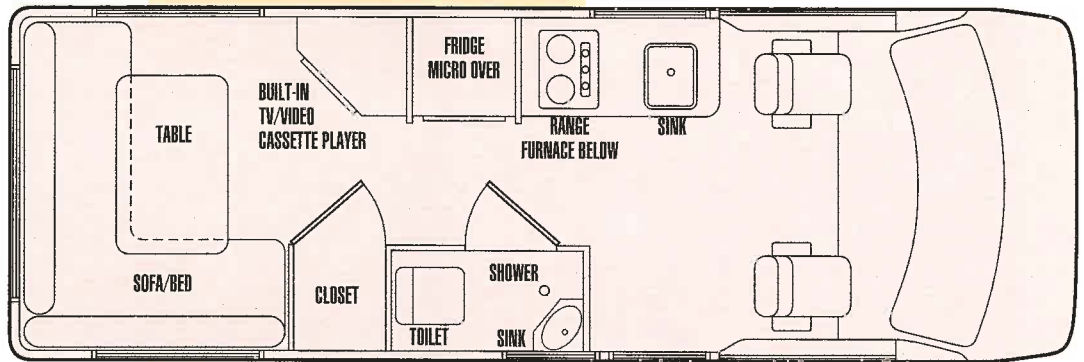
From the originators of the rear livingroom design come these four floorplans. Whether you want to carry six passengers, sleep four, or just have a relaxing vacation for two, Pleasure-Way has a model to suit everyone's needs. Four coordinated interior colour schemes with matching exterior graphics finishes off the over-all appearance which has distinctly made this the flagship of the Class B industry. All models showcase the Pleasure-Way dedication to intricate finishing and craftsmanship that has become their trademark.

PLEASURE-WAY Vanity Rear Livingroom



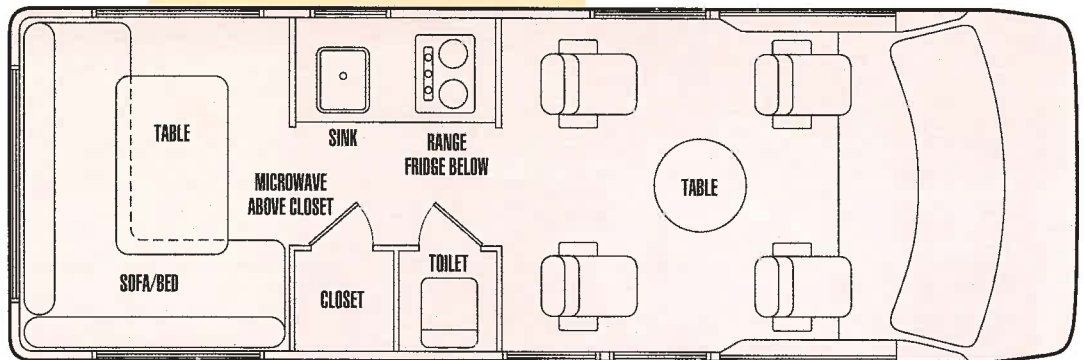
VRL

PLEASURE-WAY Shower with Rear Livingroom



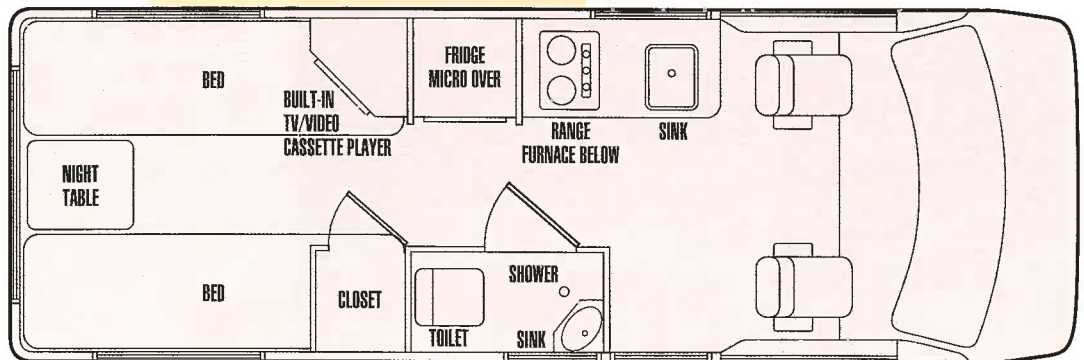
SRL

PLEASURE-WAY Multi-Passenger Rear Livingroom



MPL

PLEASURE-WAY Shower with Twin Beds



STW

DODGE B 350 CHASSIS SPECIFICATIONS

Gross vehicle weight 8510 lbs 3861 Kgs • Length (bumper to bumper) 18' 10" 5486mm • Wheel Base 127.6" 3241mm
 Width 6' 6" 2032mm • Height 8' 4" 2540 mm • Fuel tank capacity 132L 34.8 U.S. Gal • 318 (5.2 L) Magnum V8 MPI engine
 Automatic transmission & electronic overdrive • 16" Steel belted radial tires • Front stabilizer bar • Anti-lock brakes • Factory air
 Tilt steering • Cruise control • Power door locks • Power window • AM/FM Stereo Cassette • Power remote mirrors
 Spare steel belted radial tire

COACH SPECIFICATIONS

	MODEL VRL	MODEL SRL	MODEL MPL	MODEL STW
Dometic 3-Way Refrigerator (3 cu ft)	✓	✓	✓	✓
Microwave Oven	✓	✓	✓	✓
2-Burner LP Stove	✓	✓	✓	✓
Auto Forced Air Furnace	✓	✓	✓	✓
Water Flush Toilet	✓	✓	✓	✓
Water Heater	✓	✓	●	✓
Interior Height 6' 1"	✓	✓	✓	✓
Vanity with Medicine Cabinet	✓	N/A	N/A	N/A
Smoke Detector	✓	✓	✓	✓
Fire Extinguisher	✓	✓	✓	✓
Power Roof Vent	✓	✓	✓	✓
Auxiliary Battery	✓	✓	✓	✓
110V/12V 30 AMP Converter	✓	✓	✓	✓
110V Receptacles	3	2	1	2
Monitor Panel	✓	✓	✓	✓
Fresh Water Tank 82L 22 U.S. Gal	✓	✓	✓	✓
Grey Water Tank 68L 18 U.S. Gal	✓	✓	✓	✓
Black Water Tank 32L 8.5 U.S. Gal	✓	✓	✓	✓
Propane Tank 30L 8 U.S. Gal	✓	✓	✓	✓
Locking City Water./Fresh Water Fill	✓	✓	✓	✓
2 Rear Seat Belts	✓	✓	✓	N/A
Captain's Chairs Swivel & Recline	✓	✓	✓	✓
Convertible Rear Livingroom (50" x 73")	✓	✓	✓	N/A
Twin Beds (27.5" x 73.5")	N/A	N/A	N/A	✓
Power Range Hood	✓	✓	✓	✓
Wet Bath	N/A	✓	N/A	✓
Sleeper Seats	N/A	N/A	✓	N/A
Hehr Awning Style Windows	✓	✓	✓	✓
Extra Cocktail Table & Stand	✓	✓	✓	✓
Locking Power Cord Compartment	✓	✓	✓	✓
Sewer Hose Storage	✓	✓	✓	✓
Continental Spare Tire Carrier	✓	✓	✓	✓

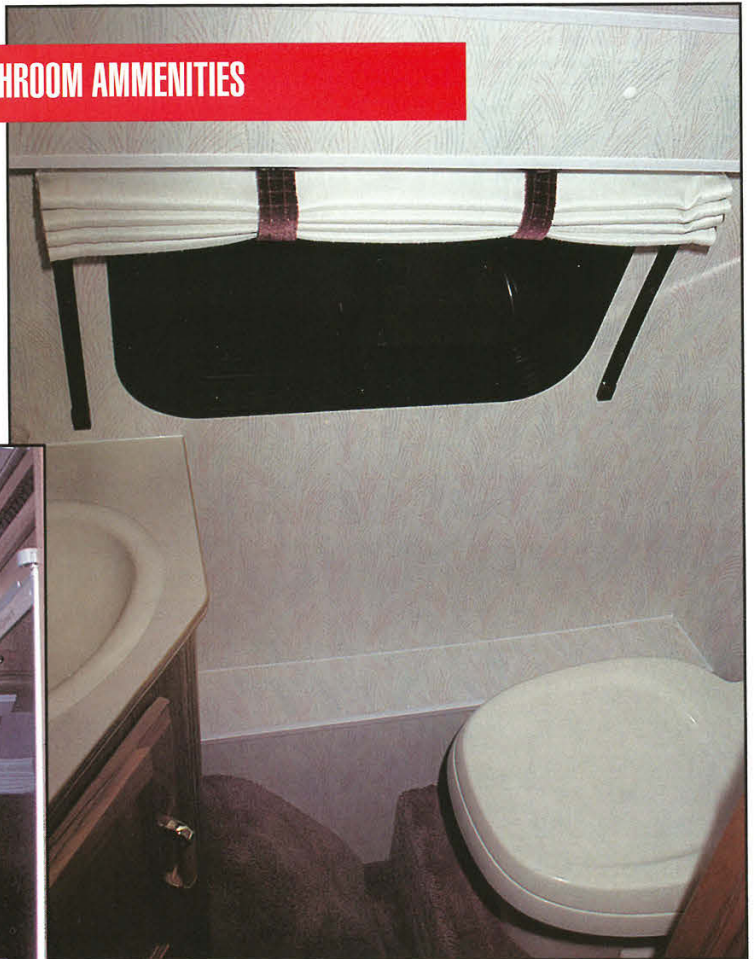
OPTIONAL EQUIPMENT

Aluminum Running Boards	●	●	●	●
Fiberglass Running Boards	●	●	●	●
Awning	●	●	●	●
Hide-A-Tenna TV Antenna	●	●	✓	●
10" Colour TV/VCP 110V/12V Remote	●	●	N/A	●
Water Heater	✓	✓	●	✓
Fan Tastic 12V Power Roof Vent	●	●	●	●
Roof Air Conditioning	●	●	●	●
Screen Package	●	●	●	●
2.8 KW Onan Microlite Generator	●	●	●	●

LEGEND: ✓ = Standard Equipment ● = Optional Equipment N/A = Not Available

BATHROOM AMMENITIES

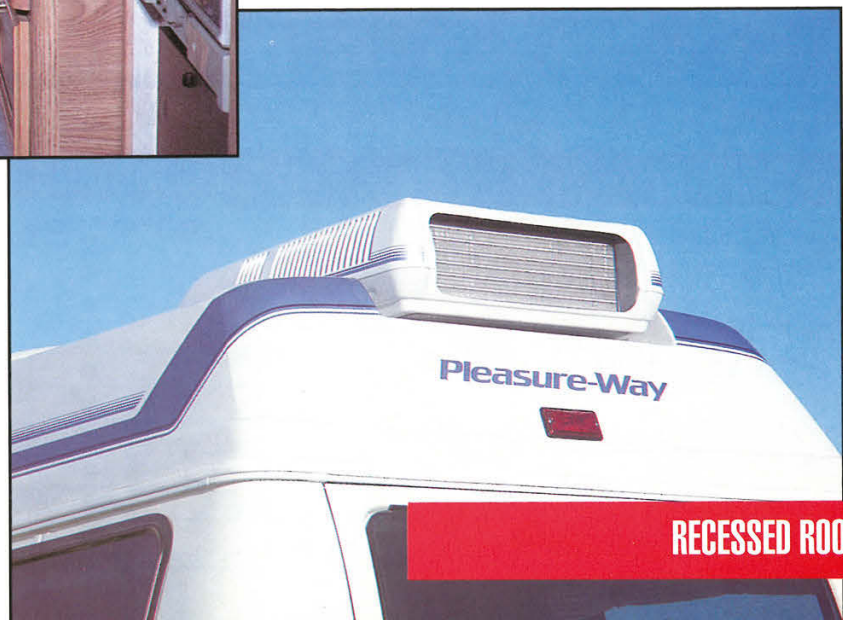
For those who don't want to setup or take down the bed arrangements or want the luxury of a king size bed. The STW offers the best of both worlds.



Accompanying a Thetford marine toilet is a medicine cabinet and vanity. All of this completes the private bathroom in the VRL.

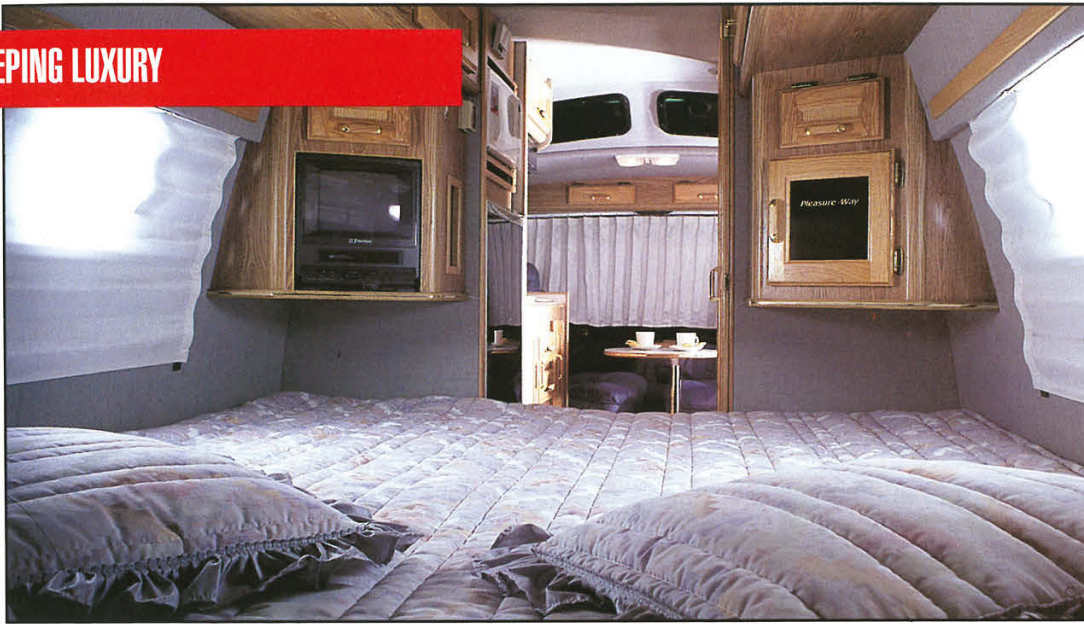


The roof has been recessed to accommodate the air conditioner, resulting in a more aerodynamic profile without compromising interior head-room.



RECESSED ROOF AIR

SLEEPING LUXURY

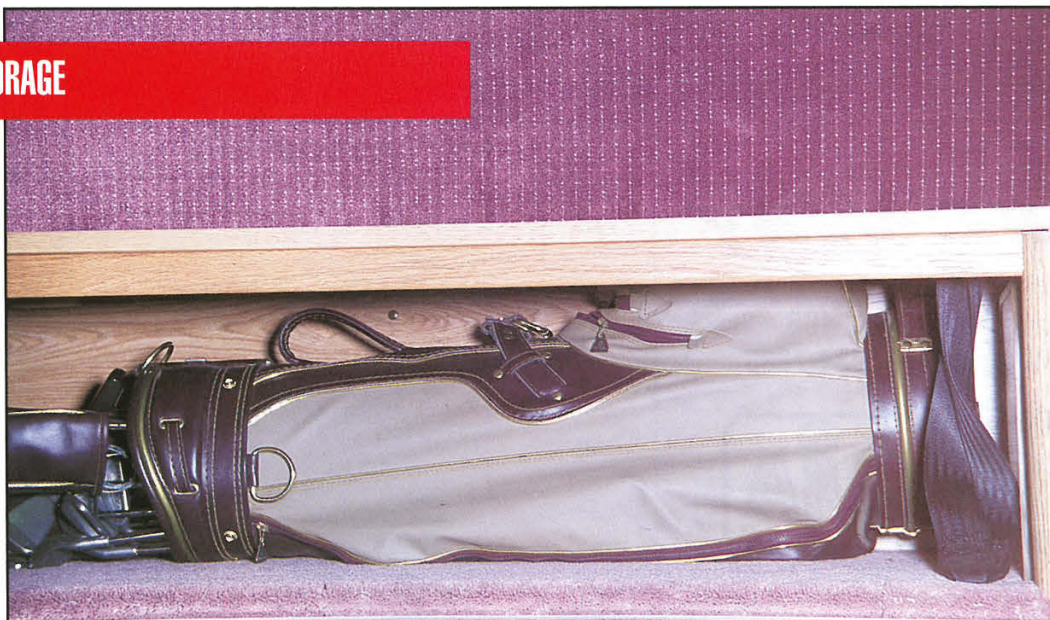


King Size bed
in the STW

Rear Livingroom
Double Bed



STORAGE



Ample storage space
is provided
underneath the L-
shaped sofa, as well
as a storage trunk
beneath the floor.

PLEASE NOTE:

All Pleasure-Way motorhomes in Canada are C.S.A. Certified, and may exceed the approved installation criteria.

All motorhomes in the United States bear the R.V.I.A seal of approval, and may exceed the individual state requirements.

Because of our policy of continuous improvements Pleasure-Way reserves the right to make product changes at any time without prior notice and without incurring obligations.

Some motorhomes depicted in this brochure may be shown with optional equipment. Some limitations may apply when deleting or adding certain options. Please see your dealer for additional information or contact Pleasure-Way Industries Ltd.

Warranty

Chrysler offers a choice of "Basic Warranty" — either a 3/60, which is a 3 year or 60,000 Km warranty covering every Chrysler supplied part of your vehicle (unless otherwise stated) or a 12/20 & 7/115 which is a 12 month or 20,000 Km warranty covering every Chrysler supplied part of your vehicle (unless otherwise stated) plus a 7 year 115,000 Km power train warranty. In the United States this warranty would be a 3/36 or 12/12 & 7/70.

Pleasure-Way motorhome warranty is 1 year inclusive on all craftsmanship entailed in the manufacturing of the motorhome.

All appliances are covered by individual warranties offered by their respective manufacturers.

AUTHORIZED DEALER

Pleasure-Way

302 Portage Ave.,
Saskatoon, Saskatchewan S7J 4C6
Tel: (306) 934-6578 Fax: (306) 934-7085



PRINTED IN CANADA

PLEASE NOTE:

All Pleasure-Way motorhomes in Canada are C.S.A. Certified, and may exceed the approved installation criteria.

All motorhomes in the United States bear the R.V.I.A seal of approval, and may exceed the individual state requirements.

Because of our policy of continuous improvements Pleasure-Way reserves the right to make product changes at any time without prior notice and without incurring obligations.

Some motorhomes depicted in this brochure may be shown with optional equipment. Some limitations may apply when deleting or adding certain options. Please see your dealer for additional information or contact Pleasure-Way Industries Ltd.

Warranty

Chrysler offers a choice of "Basic Warranty" — either a 3/60, which is a 3 year or 60,000 Km warranty covering every Chrysler supplied part of your vehicle (unless otherwise stated) or a 12/20 & 7/115 which is a 12 month or 20,000 Km warranty covering every Chrysler supplied part of your vehicle (unless otherwise stated) plus a 7 year 115,000 Km power train warranty. In the United States this warranty would be a 3/36 or 12/12 & 7/70.

Pleasure-Way motorhome warranty is 1 year inclusive on all craftsmanship entailed in the manufacturing of the motorhome.

All appliances are covered by individual warranties offered by their respective manufacturers.

AUTHORIZED DEALER

Pleasure-Way

302 Portage Ave.,
Saskatoon, Saskatchewan S7J 4C6
Tel: (306) 934-6578 Fax: (306) 934-7085



PRINTED IN CANADA