

Pleasure-Way



Refined & Inspired



Plateau

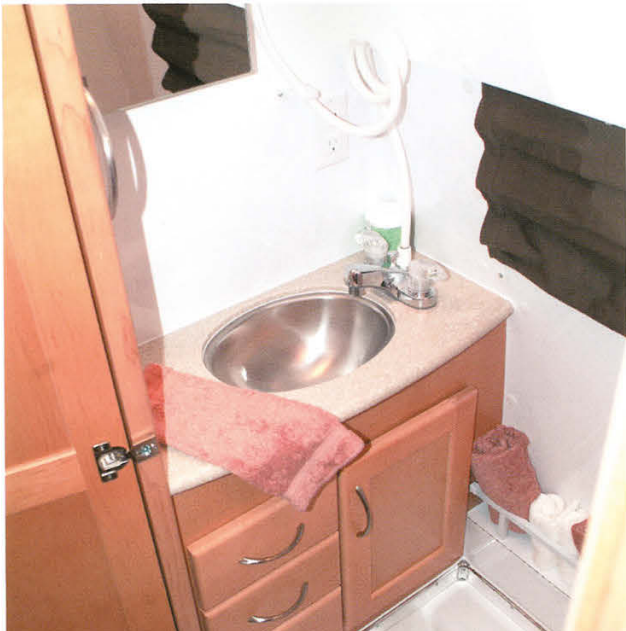
Imagine a Motorhome built with intensive meticulous craftsmanship and powered by Mercedes Benz, this culminates in the finest diesel Class B Motorhome possible. Striking a balance between sleek and modern radius cabinetry with the form and function of custom shaped Corian® countertops and luxurious Ultra Leather® Fabrics, you will redefine your expectations. Reflect your personal style by choosing between a selection of three Ultra Leather® Fabrics and maple cabinetry colors. Sink into your rear sofa as the layer of memory foam shapes to your body. You have worked hard, don't compromise, you deserve the best... Pleasure-Way Plateau.





Excel

Inspired by old world craftsmanship, the interior of the Excel Wide Body is hand crafted piece by piece showcasing the intricate detail of rich hardwood fluted maple moldings and solid arched maple cabinetry doors that warm the interior of the coach. Elegant design and the upscale residential feel of the Excel is reflected in the beautiful Corian® countertops and opulent Ultra Leather® Fabrics. Dim the flush mount halogen lights and enjoy your favorite movie on the LCD HD ready TV. With over twenty years experience in building only Class B Motorhomes, Pleasure-Way's cornerstone of success is an unwavering commitment to the highest quality without compromise. You have come to expect no less... Pleasure-Way Excel.





Lexor

Adventurers, hit the scenic highways in the Pleasure-Way Lexor built on the Chevrolet Express chassis. The sumptuous feel of Ultra Leather® front seats and a 155 inch wheel base makes this motorhome feel more like a luxury automobile. The nimble and responsive handling makes driving and parking easy even to an apprentice. In our cleverly designed kitchen, the stove cover doubles as a slide out counter extension and the flexible bathroom allows you privacy when you need it. For a quick weekend get away or a cross county excursion, the only person you'll have to answer to is the open road. . . . Pleasure-Way Lexor.



Pleasure-Way

Specifications



DIMENSIONS & CAPACITY	DODGE PLATEAU	FORD EXCEL	CHEVROLET LEXOR
FRESH WATER TANK	23 US GAL / 87 L	24 US GAL / 91L	27 US GAL / 102 L
GREY WATER TANK	24 US GAL / 91 L	26 US GAL / 97 L	27 US GAL / 102 L
BLACK WATER TANK	12 US GAL / 45 L	12 US GAL / 45 L	11 US GAL / 42 L
PROPANE TANK	12 US GAL / 45 L / 50LBS	8 US GAL / 30 L / 34LBS	10 US GAL / 38 L / 42 LBS
KING SIZE BED	N/A	73" X 81"	N/A
QUEEN SIZE BED	74" X 68"	N/A	72" X 70"
DRIVER SINGLE BED	74" X 26"	74" X 29"	73" X 26"
PASSENGER SINGLE BED	74" X 26"	72" X 29"	70" X 26"
DOUBLE BED	N/A	54" X 81"	54" X 72"
FUEL TANK	26 US GAL / 98 L DIESEL	35 US GAL / 132 L GAS	31 US GAL / 117 L GAS
INTERIOR HEIGHT	72"	74"	72"
EXTERIOR HEIGHT	9' 6" INC ROOF AIR	9' INC ROOF AIR	8' 9" INC ROOF AIR
EXTERIOR LENGTH	21' 11"	20' 4"	20' 5" INC TIRE CARRIER
EXTERIOR WIDTH	6' 6" W/O SIDE MIRRORS	7' 3" W/O SIDE MIRRORS	6' 7" W/O SIDE MIRRORS

COACH SPECIFICATIONS FOR ALL PLEASUREWAY MOTORHOMES

DOMETIC 3-WAY REFRIGERATOR 4 CU.FT.-Plateau
DOMETIC 3-WAY REFRIGERATOR 3 CU.FT.-Excel & Lexor
2 BURNER LP STOVE
MICROWAVE OVEN
CORIAN® KITCHEN COUNTER TOP-Excel & Plateau
LAMINATE KITCHEN COUNTER TOP-Lexor
16,000 BTU AUTO IGNITE FURNACE
SHURFLO DEMAND WATER SYSTEM
6 GAL SUBURBAN AUTO IGNITE WATER HEATER
WATER HEATER BY-PASS VALVES
LP, CO & SMOKE DETECTORS
5 LB FIRE EXTINGUISHER
MONITOR PANEL : HOLDING TANKS & BATTERY
ONAN GEN PREP C/W REMOTE START
LOW PROFILE FAN-TASTIC FAN VENT
110V /12V/ 45 AMP CONVERTER C/W CHARGE WIZARD
COACH BATTERY DISCONNECT SWITCH
DEEP CYCLE RV COACH MAINTENANCE FREE AGM BATTERY-Plateau
DEEP CYCLE RV COACH BATTERY-Excel & Lexor
MEMORY FOAM REAR CUSHIONS
THETFORD FLUSH TOILET
MEDICINE CABINET WITH MIRROR
CORIAN® BATHROOM COUNTER TOP C/W SINK & STORAGE
-Excel & Plateau
LAMINATE BATHROOM COUNTER TOP C/W SINK AND STORAGE-Lexor
FLEXIBLE BATHROOM STAND UP AISLE SHOWER-Lexor
PRIVATE BATHROOM STAND UP / SIT DOWN ENCLOSED SHOWER
-Excel & Plateau
SWIVEL DRIVER & PASSENGER FRONT ULTRA LEATHER® SEATS
-Excel & Lexor
MEMORY FOAM REAR CUSHIONS
WINEGARD CRANK UP TV ANTENNA
FIBERGLASS RUNNING BOARDS
EXTERIOR SHOWER
PORCH LIGHT
EXTERIOR STORAGE
CABLE TV HOOK UP
SEWER HOSE STORAGE
SLIDE OUT COACH BATTERY TRAY-Excel & Lexor
CHOICE OF NATURAL, CHERRY OR SUGAR MAPLE CABINETY
CHOICE OF SAND, TAUPE OR GREY ULTRA LEATHER® FABRIC

MOTORHOME OPTIONS

- ONAN 2.5 KW MICROLITE PROPANE GENERATOR (PLATEAU ONLY)
- 13 FOOT FIAMMA AWNING-Plateau
- 17 INCH LCD FLAT SCREEN T.V. WITH CD / DVD / MP3 PLAYER WITH SWING OUT CABINET
- ELECTRIC SOFA WITH ULTRA LEATHER® FABRIC AND MEMORY FOAM WITH SEAT BELTS
- COFFEE MAKER-Plateau & Excel
- 5.5 INCH LCD SCREEN BACK-UP CAMERA-Plateau
- FRONT PASSENGER SEAT SWIVEL-Plateau
- CONVECTION MICROWAVE N/A LEXOR
- THIRD FRONT SEAT PLATEAU ONLY
- 11,000 BTU PENGUIN ROOF AIR WITH OPTIONAL HEAT STRIP
- ONAN 2.8 KW MICROLITE GAS GENERATOR EXCEL & LEXOR
- 11 FOOT FIAMMA AWNING EXCEL & LEXOR
- FIRESTONE AIR BAG COMPRESSOR & GAUGES-Plateau & Excel
- SILVER BODY PAINT
- SANDSTONE BODY PAINT-Chevrolet



302 Portage Ave.
Saskatoon, Saskatchewan S7J 4C6
Tel: (800) 364-0189 Fax: (306) 934-7085
www.pleasureway.com

DODGE PLATEAU CHASSIS SPECIFICATIONS

- REAR VIEW MIRROR
- 8,550 LB GVWR
- 2.7 L MERCEDES BENZ TURBOCHARGED DIESEL ENGINE
- 154 HP @ 3800 RPM
- 243 FT./LB. @ 1600-2400 RPM
- 3:72 REAR AXLE RATIO
- 5 SPEED AUTOMATIC TRANSMISSION WITH TOUCH SHIFT
- 158 INCH WHEELBASE
- POWER DOOR LOCKS
- CHASSIS AIR CONDITIONING
- CRUISE CONTROL
- POWER WINDOWS
- POWER SIDE MIRRORS
- 4-WHEEL DISC BRAKES WITH ABS
- DRIVER AND PASSENGER AIR BAGS
- AM / FM CD PLAYER
- 225 / 75R / 16 BSW ALL SEASON TIRES
- FUEL TANK CAPACITY 26 US GALLON / 98 L
- REAR AIR RIDE HELPER SPRINGS
- 5000 LBS TOWING CAPACITY*
- AUXILIARY 12V OUTLET
- HITCH AND WIRING
- ALUMINUM WHEELS/STEEL SPARE

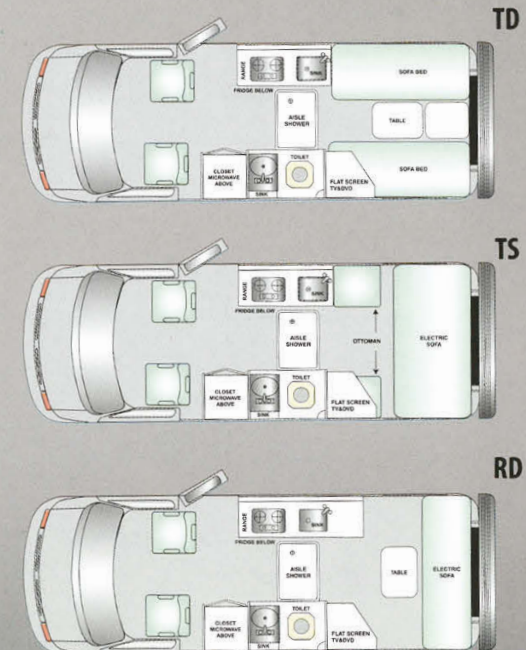
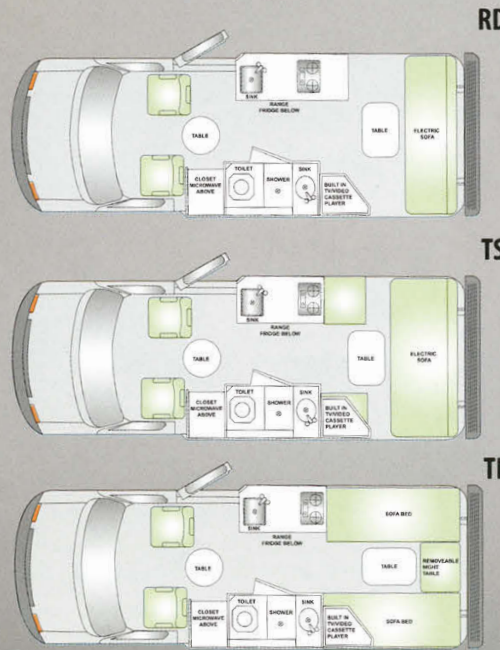
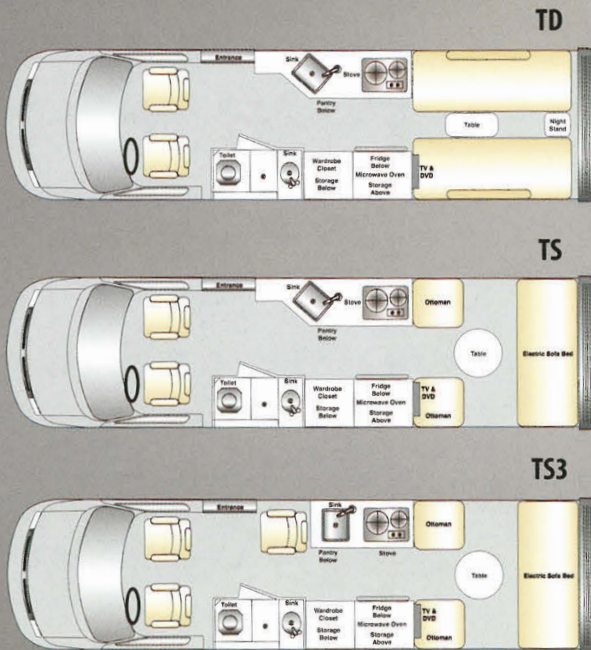
FORD EXCEL CHASSIS SPECIFICATIONS

- 9,500 LB GVWR
- 138 INCH WHEELBASE
- POWER DOOR LOCKS
- CHASSIS AIR CONDITIONING
- CRUISE CONTROL
- POWER WINDOWS
- TILT STEERING WHEEL
- POWER SIDE MIRRORS
- 4-WHEEL DISC BRAKES WITH ABS
- ALUMINUM WHEELS/STEEL SPARE
- DRIVER AND PASSENGER AIR BAGS
- AM / FM CD PLAYER
- LT245 / 75R / 16E BSW ALL SEASON TIRES
- FUEL TANK CAPACITY 35 US GALLON / 132 L
- REAR AIR RIDE HELPER SPRINGS
- AUXILIARY 12V OUTLET
- 6.8 L TRITON SEFI V10 ENGINE (OPTIONAL)
- TORQSHIFT 5 SPEED AUTOMATIC OVERDRIVE TRANSMISSION W / TOW HAUL
- 305 HP @ 4250 RPM
- 420 FT./LB. @ 3250 RPM
- 3:73 REAR AXLE RATIO
- 5000 LBS TOWING CAPACITY*
- 5.4 L TRITON SEFI V8 ENGINE (STANDARD)
- 4 SPEED AUTOMATIC OVERDRIVE TRANSMISSION
- 255 HP @ 4500 RPM
- 350 FT./LB. @ 2500 RPM
- 3:73 REAR AXLE RATIO
- 3500 LBS TOWING CAPACITY*

* Towing capacity varies depending on loaded vehicle weight

CHEVROLET LEXOR CHASSIS SPECIFICATIONS

- 9,600 LB GVWR
- 6.0 L SFI V8 VORTEC 6000 ENGINE
- 300 HP @ 4400RPM
- 360 FT./LB. @ 4000 RPM
- 3:73 REAR AXLE RATIO
- 4 SPEED AUTOMATIC OVERDRIVE TRANSMISSION WITH TOW HAUL
- 155 INCH WHEELBASE
- POWER DOOR LOCKS
- CHASSIS AIR CONDITIONING
- CRUISE CONTROL
- POWER WINDOWS
- TILT STEERING WHEEL
- REAR VIEW MIRROR W/ COMPASS AND EXTERNAL TEMPERATURE GAUGE
- POWER SIDE MIRRORS
- 4-WHEEL DISC BRAKES WITH ABS
- DRIVER AND PASSENGER AIR BAGS
- AM / FM CD PLAYER
- LT245 / 75R / 16E BSW ALL SEASON TIRES
- FUEL TANK CAPACITY 31 US GALLON / 117 L
- 5000LBS TOWING CAPACITY*
- AUXILIARY 12V OUTLET





Pleasure-Way Warranty

2007 Ford Warranty

Basic warranty coverage 3 years or 60,000 km*
(in the United States it would read 3 years or 36,000 miles*).

Roadside Assistance for 5 years or 100,000 km*/60,000 miles*.

Corrosion coverage for 7 years or 160,000 km*/100,000 miles*.

Powertrain coverage for 5 years or 100,000km*/60,000 miles*.

* Whichever comes first

2006 Dodge Warranty

Basic warranty coverage 3 years or 60,000 km*
(in the United States it would read 3 years or 36,000 miles*).

Roadside Assistance for 3 years or 60,000 km*/36,000 miles*.

Diesel Engine Components Limited Warranty 5 Years or 100,000 km*/100,000miles*.

Corrosion coverage for 5 years or 100,000 km*/100,000 miles*

* Whichever comes first

2007 Chevrolet Warranty

Basic warranty coverage 3 years or 60,000 km*
(in the United States it would read 3 years or 36,000 miles*).

Roadside Assistance for 5 years or 160,000 km*/100,000 miles*.

Corrosion coverage for 6 years or 160,000 km*/100,000 miles*.

Powertrain coverage for 5 years or 160,000km*/100,000 miles*.

* Whichever comes first

2007 Pleasureway Warranty

Pleasure-Way Van Motorhomes offer a 3 year or 60,000 km/36,000 mile limited warranty. This covers all craftsmanship entailed in the manufacturing of the motorhome only. This does not include the chassis or appliances. All appliances are covered by the individual warranties offered by their respective manufacturers.

Note: For complete chassis Warranty information please check chassis manufacturer.

Please Note:

All Pleasure-Way Van Motorhomes in Canada are C.S.A. Certified, and may exceed the approved installation criteria. All Pleasure-Way Van Motorhomes in the United States bear the R.V.I.A. Seal of Approval, and may exceed the individual state requirements. Due to our policy of continuous improvements, Pleasure-Way reserves the right to make product changes at any time without prior notice and without incurring obligations. Some motorhomes depicted in this brochure may be shown with optional equipment. Some limitations may apply when deleting or adding certain options. Please see your dealer for additional information or contact Pleasure-Way Industries Ltd.

Pleasure-Way

302 Portage Ave.
Saskatoon, Saskatchewan S7J 4C6
Tel: (800) 364-0189 Fax: (306) 934-7085
www.pleasureway.com

AUTHORIZED DEALER:

