

# *Pleasure-Way*





# *Lexor*

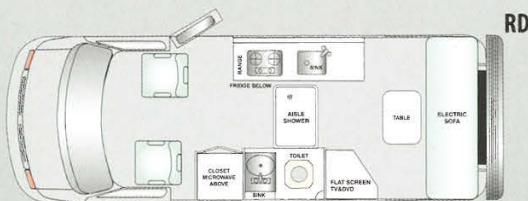
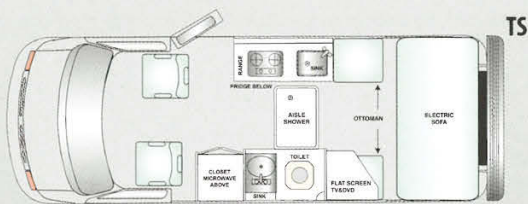
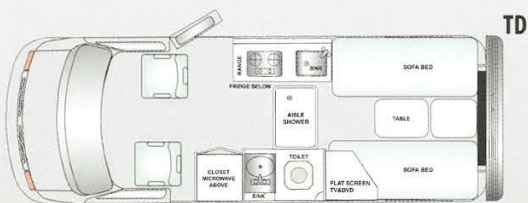
Adventurers, hit the scenic highways in the Pleasure-Way Lexor built on the Chevrolet Express chassis. The sumptuous feel of Ultra Leather® front seats and a 155-inch wheelbase makes this motorhome feel more like a luxury automobile. The nimble and responsive handling makes driving and parking easy even to an apprentice. For a quick weekend get away or a cross county excursion, the only person you'll have to answer to is the open road...Pleasure-Way Lexor.



# Pleasure-Way LEXOR

## COACH SPECIFICATIONS

DOMETIC 3-WAY REFRIGERATOR 3 CU.FT.  
 2 BURNER LP FLUSH MOUNT STOVE  
 MICROWAVE OVEN  
 CORIAN® KITCHEN COUNTERTOP W/ STAINLESS STEEL SINKS  
 16,000 BTU AUTO IGNITE FURNACE  
 SHURFLO DEMAND WATER SYSTEM  
 6 GAL SUBURBAN AUTO IGNITE WATER HEATER  
 WATER HEATER BY-PASS VALVES  
 FLIP UP COUNTERTOP EXTENSION  
 LP, CO & SMOKE DETECTORS  
 5 LB FIRE EXTINGUISHER  
 MONITOR PANEL: HOLDING TANKS & BATTERY  
 ONAN GEN PREP C/W REMOTE START  
 LOW PROFILE FAN-TASTIC FAN VENT  
 110V /12V/ 45 AMP CONVERTER C/W CHARGE WIZARD  
 COACH BATTERY DISCONNECT SWITCH  
 DEEP CYCLE RV COACH BATTERY  
 MEMORY FOAM REAR CUSHIONS  
 THETFORD FLUSH TOILET  
 MEDICINE CABINET WITH MIRROR  
 FRONT AND REAR DINETTE  
 INTERIOR HEIGHT 73"  
 FLEXIBLE BATHROOM STAND UP AISLE SHOWER  
 CORIAN® BATHROOM COUNTERTOP W/ STAINLESS STEEL SINK W/ STORAGE  
 SWIVEL DRIVER & PASSENGER FRONT ULTRA LEATHER® SEATS  
 SLIDE OUT COACH BATTERY TRAY  
 FRESH WATER TANK 27 US GAL / 102 L  
 GREY WATER TANK 27 US GAL / 102 L  
 BLACK WATER TANK 11 US GAL / 42 L  
 PROPANE TANK 10 US GAL / 38 L / 42 LBS  
 CHOICE OF NATURAL, CHERRY OR SUGAR MAPLE CABINERY  
 CHOICE OF SAND, TAUPE OR GREY ULTRA LEATHER® FABRIC  
 QUEEN SIZE BED 72" X 70"  
 DRIVER SINGLE BED 73" X 26"  
 PASSENGER SINGLE BED 70" X 26"  
 DOUBLE BED 54" X 72" (RD MODEL ONLY)  
 3 YEAR 36,000 MILE / 60,000 KM LIMITED COACH WARRANTY



## OPTIONS

- 13,500 BTU ROOF AIR CONDITIONER WITH THERMOSTATIC CONTROL
- ONAN 2.8 KW MICROLITE GAS GENERATOR
- 11' BOX STYLE AWNING
- 19" LCD FLAT SCREEN WITH DVD/ MP3 / CD PLAYER
- ELECTRIC SOFA WITH SEAT BELTS
- SANDSTONE OR SILVER BODY PAINT
- UPGRADED BLACK CORIAN COUNTER TOPS
- FRONT BUMPER COVER

## EXTERIOR FEATURES

- EXTERIOR SHOWER
- CONVENIENT UTILITY HOOK UP CENTER
- FRAMELESS AWNING STYLE WINDOWS
- WINEGARD DIRECTIONAL TV ANT WITH BOOSTER
- PORCH LIGHT
- EXTERNAL LOCKING FRESH WATER FILL
- SEWER HOSE STORAGE
- REAR CONTINENTAL TIRE CARRIER
- EXTERIOR PARK CABLE TV HOOK UP
- EXTERIOR CITY WATER HOOK UP
- EXTERIOR SHORE POWER HOOK UP
- FIBREGLASS RUNNING BOARDS
- EXTERIOR STORAGE
- 110V RECEPTACLES
- HITCH
- EXT LENGTH 20' 5" INCL / REAR TIRE CARRIER
- EXT HEIGHT WITH ROOF AIR CONDITIONER 8' 9"
- EXTERNAL WIDTH WITHOUT SIDE MIRRORS 6' 7"

## 2008 CHEVROLET LEXOR CHASSIS SPECIFICATIONS

- 9,600 LB GVWR
- 6.0 L SFI V8 VORTEC 6000 ENGINE
- 323 HP @ 4,600RPM
- 373 FT./LB. @ 4,400 RPM
- 3:73 REAR AXLE RATIO
- 4 SPEED AUTOMATIC OVERDRIVE TRANSMISSION WITH TOW HAUL
- 155 INCH WHEELBASE
- POWER DOOR LOCKS
- CHASSIS AIR CONDITIONING
- CRUISE CONTROL
- POWER WINDOWS
- TILT STEERING WHEEL
- POWER SIDE MIRRORS
- 4-WHEEL DISC BRAKES WITH ABS
- DRIVER AND PASSENGER AIR BAGS
- AM / FM CD PLAYER
- LT245 / 75R / 16E BSW ALL SEASON TIRES
- FUEL TANK CAPACITY 31 US GALLON / 117 L
- 5000LBS TOWING CAPACITY\*
- AUXILIARY 12V OUTLET
- TIRE PRESSURE MONITORING SYSTEM
- THEFT DETERRENT SYSTEM
- D.I.C. DRIVER INFORMATION CENTER



# *Excel*

Inspired by old world craftsmanship, the interior of the Excel Wide Body is hand crafted piece by piece showcasing the intricate detail of rich hardwood fluted maple moldings and solid arched maple cabinetry doors that warm the interior of the coach. Elegant design and the upscale residential feel of the Excel is reflected in the beautiful Corian® countertops and opulent Ultra Leather® Fabrics. Dim the flush mount halogen lights and enjoy your favorite movie on the LCD HD ready TV. With over twenty years experience in building only Class B Motorhomes, Pleasure-Way's cornerstone of success is an unwavering commitment to the highest quality without compromise. You have come to expect no less...Pleasure-Way Excel.



# Pleasure-Way **Excel**

## COACH SPECIFICATIONS

DOMETIC 3-WAY REFRIGERATOR 3 CU.FT.  
 2 BURNER LP FLUSH MOUNT STOVE  
 MICROWAVE OVEN  
 CORIAN® KITCHEN COUNTER TOP W/ STAINLESS STEEL SINK  
 FLIP UP COUNTERTOP EXTENSION  
 16,000 BTU AUTO IGNITE FURNACE  
 FRESHWATER TANK 24 US GAL / 91 L  
 GREYWATER TANK 26 US GAL / 97 L  
 BLACKWATER TANK 12 US GAL / 45 L  
 PROPANE TANK 8 US GAL / 30 L / 34 LBS  
 SHURFLO DEMAND WATER SYSTEM  
 6 GAL SUBURBAN AUTO IGNITE WATER HEATER  
 WATER HEATER BY-PASS VALVES  
 LP, CO & SMOKE DETECTORS  
 5 LB FIRE EXTINGUISHER  
 MONITOR PANEL: HOLDING TANKS & BATTERY  
 ONAN GEN PREP C/W REMOTE START  
 LOW PROFILE FAN-TASTIC FAN VENT  
 110V /12V/ 45 AMP CONVERTER C/W CHARGE WIZARD  
 COACH BATTERY DISCONNECT SWITCH  
 DEEP CYCLE RV COACH BATTERY  
 SLIDE OUT COACH BATTERY TRAY  
 MEMORY FOAM REAR CUSHIONS  
 THETFORD FLUSH TOILET  
 FRONT AND REAR DINETTE  
 MEDICINE CABINET WITH MIRROR  
 CORIAN® BATHROOM COUNTERTOP C/W STAINLESS STEEL SINK & STORAGE  
 PRIVATE BATHROOM STAND UP / SIT DOWN ENCLOSED SHOWER  
 SWIVEL DRIVER & PASSENGER FRONT ULTRA LEATHER® SEATS  
 CHOICE OF NATURAL, CHERRY OR SUGAR MAPLE CABINetry  
 CHOICE OF SAND, TAUPE OR GREY ULTRA LEATHER® FABRIC  
 INTERIOR HEIGHT 74"  
 KING SIZE BED 73" X 81"  
 DRIVERS SINGLE BED 74" X 29"  
 PASSENGER SINGLE BED 72" X 29"  
 3 YEAR 36,000 MILE / 60,000 KM LIMITED COACH WARRANTY

## OPTIONS

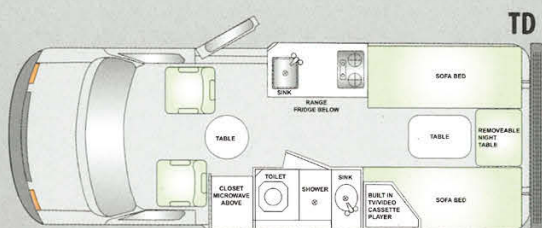
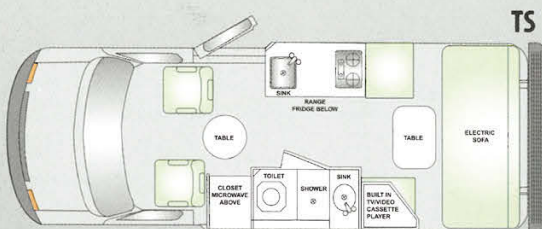
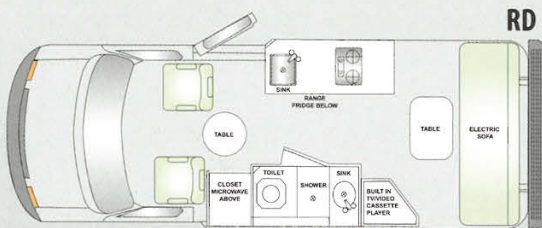
- 11,000 BTU ROOF AIR CONDITIONER WITH OPTIONAL HEAT STRIP
- ONAN 2.8 KW MICROLITE GAS GENERATOR
- 11' AWNING
- 19" LCD FLAT SCREEN WITH DVD / MP3 / CD PLAYER
- FIRESTONE REAR AIR SPRING COMPRESSOR KIT
- UPGRADED BLACK CORIAN COUNTERTOP
- ELECTRIC SOFA WITH SEAT BELTS
- CONVECTION MICROWAVE
- SILVER OR PUEBLO GOLD BODY PAINT
- COFFEE MAKER
- HITCH AND WIRING

## EXTERIOR FEATURES

- EXTERIOR SHOWER
- CONVENIENT UTILITY HOOK UP CENTER
- FRAMELESS AWNING STYLE WINDOWS
- WINEGARD DIRECTIONAL TV ANT WITH BOOSTER
- PORCH LIGHT
- EXTERNAL LOCKING FRESH WATER FILL
- SEWER HOSE STORAGE
- REAR CONTINENTAL TIRE CARRIER
- EXTERIOR STORAGE
- EXTERIOR PARK CABLE TV HOOK UP
- EXTERIOR CITY WATER HOOK UP
- EXTERIOR SHORE POWER HOOK UP
- FIBREGLASS RUNNING BOARDS
- 110V RECEPTACLES
- EXT LENGTH 20'4"
- EXT HEIGHT WITH ROOF AIR CONDITIONER 9'
- EXTERNAL WIDTH 7' 10" WITH SIDE MIRRORS

## 2008 FORD EXCEL CHASSIS SPECIFICATIONS

- 9,500 LB GVWR
  - 138 INCH WHEELBASE
  - POWER DOOR LOCKS
  - CHASSIS AIR CONDITIONING
  - CRUISE CONTROL
  - POWER WINDOWS
  - TILT STEERING WHEEL
  - POWER SIDE MIRRORS
  - 4-WHEEL DISC BRAKES WITH ABS
  - ALUMINUM WHEELS W/STEEL SPARE
  - DRIVER AND PASSENGER AIR BAGS
  - AM / FM CD PLAYER
  - LT245 / 75R / 16E BSW ALL SEASON TIRES
  - FUEL TANK CAPACITY 35 US GALLON / 132 L
  - REAR AIR RIDE HELPER SPRINGS
  - AUXILIARY 12V OUTLET
  - TIRE PRESSURE MONITORING SYSTEM
  - REAR WHEEL SPACERS
  - EOTC-ENGINE ONLY TRACTION CONTROL
  - 6.8 L TRITON SEFI V10 ENGINE (optional)
  - TORQSHIFT 5 SPEED AUTOMATIC OVERDRIVE TRANSMISSION W / TOW HAUL
  - 305 HP @ 4250 RPM
  - 420 FT./LB. @ 3250 RPM
  - 3:73 REAR AXLE RATIO
  - 5000 LBS TOWING CAPACITY\*
  - 5.4 L TRITON SEFI V8 ENGINE (standard)
  - 4 SPEED AUTOMATIC OVERDRIVE TRANSMISSION
  - 255 HP @ 4500 RPM
  - 350 FT./LB. @ 2500 RPM
  - 3:73 REAR AXLE RATIO---
  - 3500 LBS TOWING CAPACITY\*
- \*Towing capacity varies depending on loaded vehicle weight





# *Lexor* RL-4

Pleasure-Way Industries Ltd. is proud to unveil the newest addition to its product line - the 2008 Lexor RL-4. This Class "B" van motorhome is built on a Chevrolet Express chassis, which features an 6.0 litre V8 gas engine that averages approximately 14-16 mpg on the highway. The Lexor RL-4 has four seats up front and sleeps four, making it the ideal van motorhome for families and for couples who enjoy travelling together. It is the perfect crossover vehicle for those who want the versatility of a conversion van while enjoying all the amenities of a "home on the road".

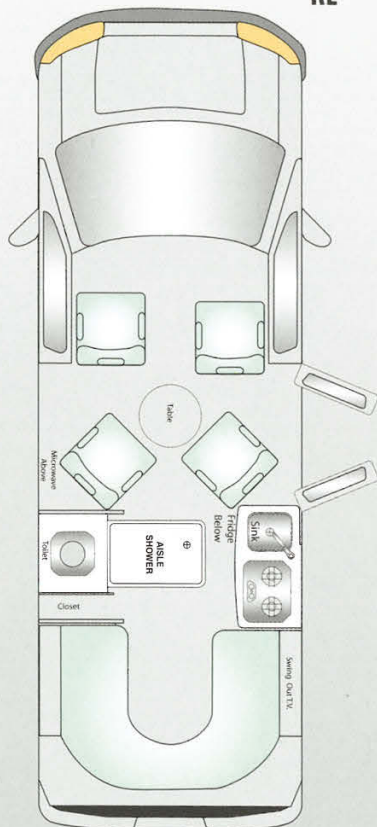


# Pleasure-Way LEXOR RL-4

## COACH SPECIFICATIONS

DOMETIC 3-WAY REFRIGERATOR 3 CU. FT.  
 MICROWAVE OVEN  
 FLUSH MOUNT 2 BURNER STOVE  
 CORIAN® KITCHEN COUNTERTOP WITH STAINLESS STEEL SINK  
 16,000 BTU AUTO IGNITE FURNACE  
 SHURFLO DEMAND WATER SYSTEM  
 6 GAL SUBURBAN AUTO IGNITE WATER HEATER  
 WATER HEATER BY-PASS VALVE  
 LP DETECTOR, CO DETECTOR, SMOKE DETECTOR  
 5 LB FIRE EXTINGUISHER  
 MONITOR PANEL: HOLDING TANKS & BATTERY  
 ONAN GENERATOR PREP PACKAGE WITH REMOTE START SWITCH  
 FLIP UP COUNTER EXTENSION  
 LOW PROFILE FAN-TASTIC FAN  
 110V / 12V / 45AMP CONVERTER WITH CHARGER  
 AUXILIARY BATTERY DISCONNECT  
 FRESH WATER TANK 27 US GAL / 102 L  
 GREY WATER TANK 27 US GAL / 102 L  
 BLACK WATER TANK 10.8 US GAL / L  
 LP TANK 10 US GALLON / 38 L / 42 LBS  
 INTERIOR STANDING HEIGHT 73"  
 DRIVER AND PASSENGER FRONT SEAT SWIVEL AND RECLINE  
 DRIVER AND PASSENGER SECOND ROW SEATING SWIVEL  
 REAR LOUNGE CONVERTS INTO DOUBLE BED SIZE 54" X 70"  
 SECOND ROW SEATING CONVERT INTO 21" X 65" SINGLE BEDS  
 FRONT AND REAR DINETTES  
 DEEP CYCLE RV AUXILIARY BATTERY  
 CHOICE OF NATURAL, CHERRY OR SUGAR MAPLE CABINETRY  
 CHOICE OF SAND, TAUPE OR GREY ULTRA LEATHER® FABRIC  
 3 YEAR 36,000 MILE / 60,000 KM LIMITED COACH WARRANTY

RL



## BATHROOM FEATURES

- THETFORD FLUSH TOILET
- STAND UP AISLE SHOWER
- TEMPORARY PRIVACY AREA

## EXTERIOR FEATURES

- EXTERIOR SHOWER
- SLIDE OUT AUXILIARY BATTERY
- CONVENIENT UTILITY HOOK-UP CENTER
- FRAMELESS AWNING STYLE WINDOWS
- LARGE EXTERNAL STORAGE COMPARTMENT
- WINEGARD DIRECTIONAL TV ANTENNA WITH BOOSTER
- PORCH LIGHT
- LOCKING FRESH WATER FILL
- SEWER HOSE STORAGE
- REAR-DOOR FULL-SIZE SPARE TIRE CONTINENTAL TIRE CARRIER
- EXTERIOR CABLE TV HOOK UP
- FIBREGLASS RUNNING BOARDS
- EXTERIOR HEIGHT 8 FEET 9 INCHES (INC ROOF AIR)
- EXTERIOR LENGTH 20 FEET 5 INCHES
- EXTERIOR WIDTH 7 FEET 10 INCHES (WITH SIDE MIRRORS)
- 110V RECEPTACLES
- REAR FIBREGLASS BUMPER COVER
- HITCH
- CHROME WHEEL COVERS

## OPTIONS

- 13,500 BTU CARRIER ROOF AIR WITH THERMOSTATIC CONTROL
- ONAN 2.8 KW MICROLITE GAS GENERATOR
- 11 FOOT FIAMMA AWNING
- 19 INCH LCD FLATSCREEN WITH CD / DVD / MP3 PLAYER
- UPGRADED BLACK COLOR CORIAN COUNTERTOP
- SECOND ROW SEATING ENTERTAINMENT PACKAGE THAT INCLUDES 7 INCH LCD TV SCREENS LOCATED IN PASSENGER AND DRIVER SEAT HEADRESTS, TWO WIRELESS HEADSETS AND A FRONT CD / DVD / MP3 PLAYER
- FRONT BUMPER COVER

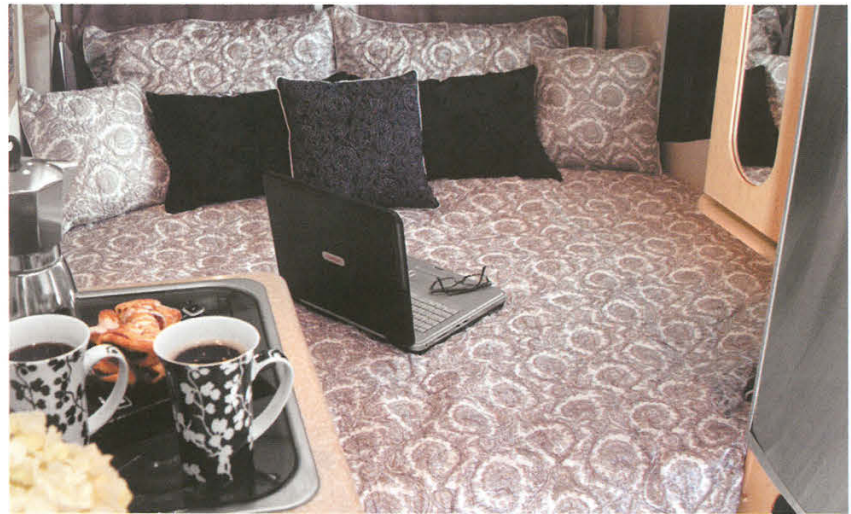
## 2008 LEXOR RL-4 CHASSIS SPECIFICATIONS

- 9,600 LB GVWR
- 6.0 L SFI V8 VORTEC 6000 ENGINE
- 323 HP @ 4,600 RPM
- 373 LB.-FT @ 4,400 RPM
- 3:73 REAR AXLE RATIO
- 4 SPEED AUTOMATIC OVERDRIVE TRANSMISSION WITH TOW HAUL
- 155 INCH WHEELBASE
- POWER DOOR LOCKS
- CHASSIS AIR CONDITIONING
- CRUISE CONTROL
- POWER WINDOWS
- TILT STEERING WHEEL
- POWER SIDE MIRRORS
- 4-WHEEL DISC BRAKES WITH ABS
- DRIVER AND PASSENGER AIR BAGS
- AM / FM CD PLAYER
- LT245 / 75R / 16E BSW ALL SEASON TIRES
- FUEL TANK CAPACITY 31 US GALLON / 117 L
- 5000LBS TOWING CAPACITY
- AUXILIARY 12V OUTLET
- TIRE PRESSURE MONITORING SYSTEM
- THEFT DETERRENT SYSTEM
- D.I.C. DRIVER INFORMATION CENTER



# *Ascent*

Imagine a Motorhome built with intensive meticulous craftsmanship and powered by 144-inch wheelbase Dodge Sprinter van featuring a 3.0 Litre Mercedes Benz diesel engine. This culminates in the finest nimble diesel Class B Motorhome. The nimble and responsive handling makes driving and parking easy even to an apprentice. Striking a balance between sleek and modern radius cabinetry with the form and function of custom shaped Corian® countertops and luxurious Ultra Leather® Fabrics, you will redefine your expectations. Reflect your personal style by choosing between a selection of three Ultra Leather® Fabrics and maple cabinetry colors. You have worked hard, don't compromise, you deserve the best... Pleasure-Way Ascent.





# Pleasure-Way Ascent

## COACH SPECIFICATIONS

DOMETIC 3-WAY REFRIGERATOR 4 CU.FT.  
 2 BURNER FLUSH MOUNT STOVE  
 MICROWAVE OVEN  
 CORIAN® KITCHEN COUNTER TOP W/ STAINLESS STEEL SINK  
 FLIP UP COUNTER EXTENSION  
 16,000 BTU AUTO IGNITE FURNACE  
 FRESHWATER TANK 20 US GAL / 76 L  
 GREYWATER TANK 15 US GAL / 57 L  
 BLACKWATER TANK 10 US GAL / 38 L  
 PROPANE TANK 10 US GAL / 30 L / 42 LBS  
 SHURFLO DEMAND WATER SYSTEM  
 6 GAL SUBURBAN AUTO IGNITE WATER HEATER  
 WATER HEATER BY-PASS VALVES  
 LP, CO & SMOKE DETECTORS  
 5 LB FIRE EXTINGUISHER  
 MONITOR PANEL: HOLDING TANKS, LP & BATTERY  
 ONAN GEN PREP C/W REMOTE START  
 LOW PROFILE FAN-TASTIC FAN VENT  
 110V /12V/ 45 AMP CONVERTER C/W CHARGE WIZARD  
 COACH BATTERY DISCONNECT SWITCH  
 DEEP CYCLE RV COACH BATTERY  
 MEMORY FOAM REAR CUSHIONS  
 THETFORD FLUSH TOILET  
 PRIVATE BATHROOM WITH SHOWER AND SINK  
 INTERIOR HEIGHT 75"  
 ISLE WIDTH 26"  
 QUEEN SIZE BED 70' X 72'  
 CHOICE OF NATURAL, CHERRY OR SUGAR MAPLE CABINETRY  
 CHOICE OF SAND, TAUPE OR GREY ULTRA LEATHER® FABRIC  
 3 YEAR 36,000 MILE / 60,000 KM LIMITED COACH WARRANTY

## OPTIONS

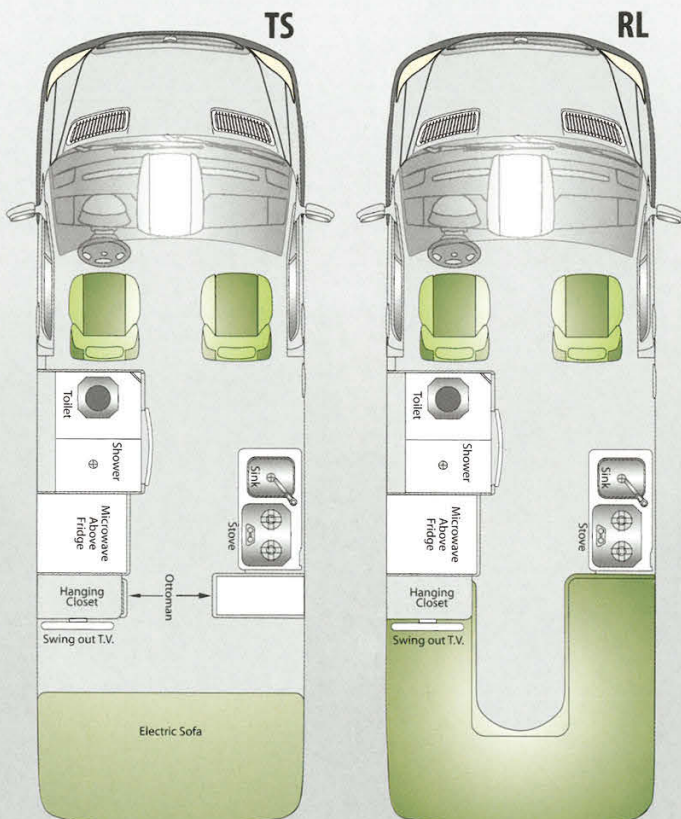
- 13,500 BTU ROOF AIR CONDITIONER WITH THERMOSTATIC CONTROL
- ONAN 2.5 KW MICROLITE PROPANE GENERATOR
- 10' AWNING
- 19" LCD FLAT SCREEN WITH DVD/ MP3 / CD PLAYER
- FIRESTONE REAR AIR SPRING COMPRESSOR KIT
- UPGRADED BLACK CORIAN COUNTERTOP
- ELECTRIC SOFA WITH SEAT BELTS
- ALUMINUM WHEELS WITH STEEL RIM SPARE TIRE

## EXTERIOR FEATURES

- EXTERIOR SHOWER
- CONVENIENT UTILITY HOOK UP CENTER
- FRAMELESS AWNING STYLE WINDOWS
- WINEGARD DIRECTIONAL TV ANT WITH BOOSTER
- PORCH LIGHT
- INTERNAL LOCKING FRESH WATER FILL
- SEWER HOSE STORAGE
- REAR CONTINENTAL TIRE CARRIER
- EXTERIOR PARK CABLE TV HOOK UP
- EXTERIOR CITY WATER HOOK UP
- EXTERIOR SHORE POWER HOOK UP
- FIBREGLASS RUNNING BOARDS
- 110V RECEPTACLES
- HITCH AND WIRING
- FIRESTONE REAR AIR HELPER SPRINGS
- EXT LENGTH 20' 8" INCL / REAR TIRE CARRIER
- EXT HEIGHT WITH ROOF AIR CONDITIONER 9' 5"
- EXTERNAL WIDTH WITH SIDE MIRRORS 7' 10"
- EXTERNAL LOCKING FUEL FILL

## 2007 DODGE ASCENT CHASSIS SPECIFICATIONS

- 8,550 GVWR SPRINTER VAN CHASSIS
- 3.0L V6 MERCEDES BENZ TURBO CHARGED DIESEL
- 154 HP @ 3400 RPM
- 280 LB.-FT @ 1200-2400 RPM
- WHEEL BASE 144"
- POWER DOOR LOCKS
- POWER WINDOWS
- CHASSIS AIR CONDITIONING
- CRUISE CONTROL
- TILT STEERING
- 5 SPEED AUTOMATIC TRANSMISSION
- FUEL CAPACITY 26 US GALLON
- 4 WHEEL DISC BRAKES WITH ABS
- TIRES 245 / 75 / R16 BSW ALL SEASON TIRES
- ADAPTIVE ELECTRONIC STABILITY CONTROL
- TRACTION CONTROL
- TIRE PRESSURE MONITOR SYSTEM
- DRIVER AND PASSENGER AIR BAGS
- AM / FM CD PLAYER



# Pleasure-Way Warranty



## 2008 Ford Warranty

Bumper to Bumper warranty coverage 3 years or 60,000 km\* / 36,000 miles\*.  
Roadside Assistance for 5 years or 100,000 km\* / 60,000 miles\*.  
Corrosion coverage for 5 years unlimited mileage.  
Powertrain coverage for 5 years or 100,000 km\* / 60,000 miles\*.  
\* Whichever comes first

## 2007/08 Dodge Warranty

Bumper to Bumper warranty coverage 3 years or 60,000 km\* / 36,000 miles\*.  
Roadside Assistance for 3 years or 60,000 km\* / 36,000 miles\*.  
Diesel Engine Components Limited Warranty 5 Years or 160,000 km\* / 100,000 miles\*.  
Corrosion coverage for 5 years or 160,000 km\* / 100,000 miles\*.  
\* Whichever comes first

## 2008 Chevrolet Warranty

Bumper to Bumper coverage 3 years or 60,000 km\* / 36,000 miles\*.  
Roadside Assistance for 5 years or 160,000 km\* / 100,000 miles\*.  
Corrosion coverage for 6 years or 160,000 km\* / 100,000 miles\*.  
Powertrain coverage for 5 years or 160,000 km\* / 100,000 miles\*.  
\* Whichever comes first



## 2008 Pleasureway Warranty

Pleasure-Way Van Motorhomes offer a 3 year or 60,000 km/36,000 mile limited warranty. This covers all craftsmanship entailed in the manufacturing of the motorhome only. This does not include the chassis or appliances. All appliances are covered by the individual warranties offered by their respective manufacturers.



### Please Note:

All Pleasure-Way Van Motorhomes in Canada are C.S.A. Certified, and may exceed the approved installation criteria. All Pleasure-Way Van Motorhomes in the United States bear the R.V.I.A. Seal of Approval, and may exceed the individual state requirements. Due to our policy of continuous improvements, Pleasure-Way reserves the right to make product changes at any time without prior notice and without incurring obligations. Some motorhomes depicted in this brochure may be shown with optional equipment. Some limitations may apply when deleting or adding certain options. Please see your dealer for additional information or contact Pleasure-Way Industries Ltd.

302 Portage Ave. Saskatoon, Saskatchewan Canada S7J 4C6

Tel: (800) 364-0189 Fax: (306) 934-7085

[www.pleasureway.com](http://www.pleasureway.com)

AUTHORIZED DEALER:

